



# Advances Towards Epidemic Control: PEPFAR Contributions

---

Shannon Allen, PhD  
USAID, Office of HIV AIDS  
Research Division | Microbicide Branch

# The Evolution of PEPFAR

## **PEPFAR I (2001-2009)**

- Emergency response
- AIDS- a security issue
- Rapidly delivering prevention, care, and treatment services

## **PEPFAR II (2009-2014)**

- Sustainable response
- Shared responsibility & country-driven programs
- Building & strengthening health systems to deliver HIV services
- Scaling up of prevention, care, and treatment service

## **PEPFAR III (2014-present)**

- Epidemic control of HIV/AIDS
- End of HIV/AIDS as a public health threat
- Data, quality, oversight, transparency & accountability for impact
- Accelerating core interventions for epidemic control

# PEPFAR's 3 Guiding Pillars

## Controlling the HIV Pandemic

### **Accountability**

Demonstrate cost-effective programming that maximizes the impact of every dollar invested

### **Transparency**

Demonstrate increased transparency with validation and sharing of all levels of program data

### **Impact**

Demonstrate sustained control of the epidemic; save lives and avert new infections

---

# Understanding the HIV/AIDS Epidemic in Sub-Saharan Africa





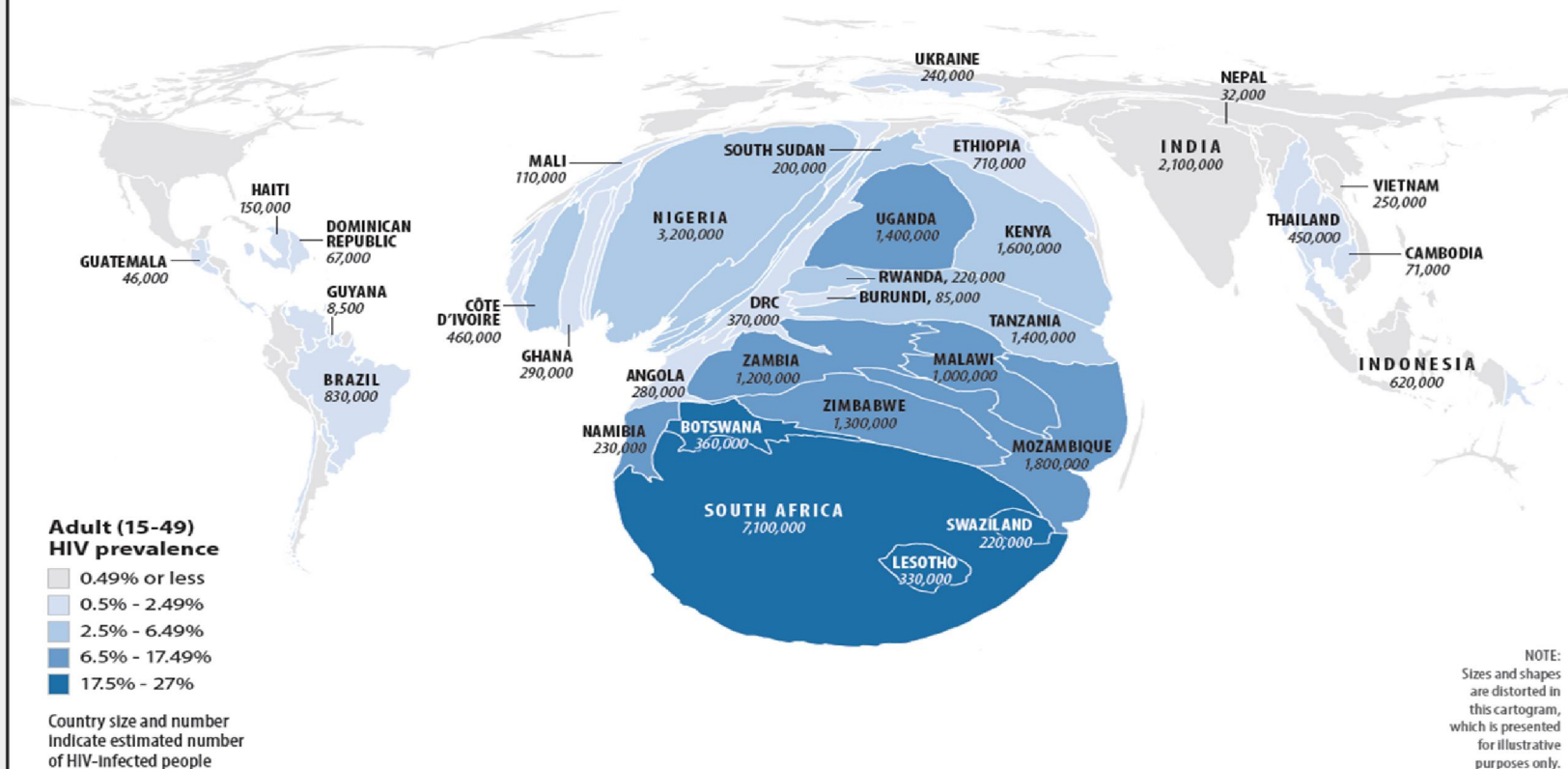
**PEPFAR**  
U.S. President's Emergency Plan for AIDS Relief



U.S. Department of State  
[hiu\\_info@state.gov](mailto:hiu_info@state.gov)  
<https://hiu.state.gov>  
**HUMANITARIAN INFORMATION UNIT**

Unclassified

## Adult HIV Prevalence and Estimated Number of Adults and Children Infected with HIV, 2016



Names and boundary representation are not necessarily authoritative

Sources: UNAIDS, WHO, CDC, National Health and Family Planning Commission of The People's Republic of China

November 28, 2017 - U1708 STATE (HIU)

# Key Gaps Exist that Need to be Addressed to Achieve Epidemic Control

## Eastern and Southern Africa

- High prevalence/generalized epidemic
- **Key Gaps:**
  - Clinical and **prevention** cascade for priority populations
  - **Prevention** interventions to saturation
  - 15-30 age group
  - Early Treatment - Men – all ages

## Western and Central Africa

- Low prevalence/generalized epidemic
- **Key gaps**
  - Clinical and **prevention** cascade for priority populations
  - Inconsistent political will to address all priority populations with necessary interventions
  - **Ensuring access** to services for young people and men of all ages
  - Strategies to address **stigma and discrimination**

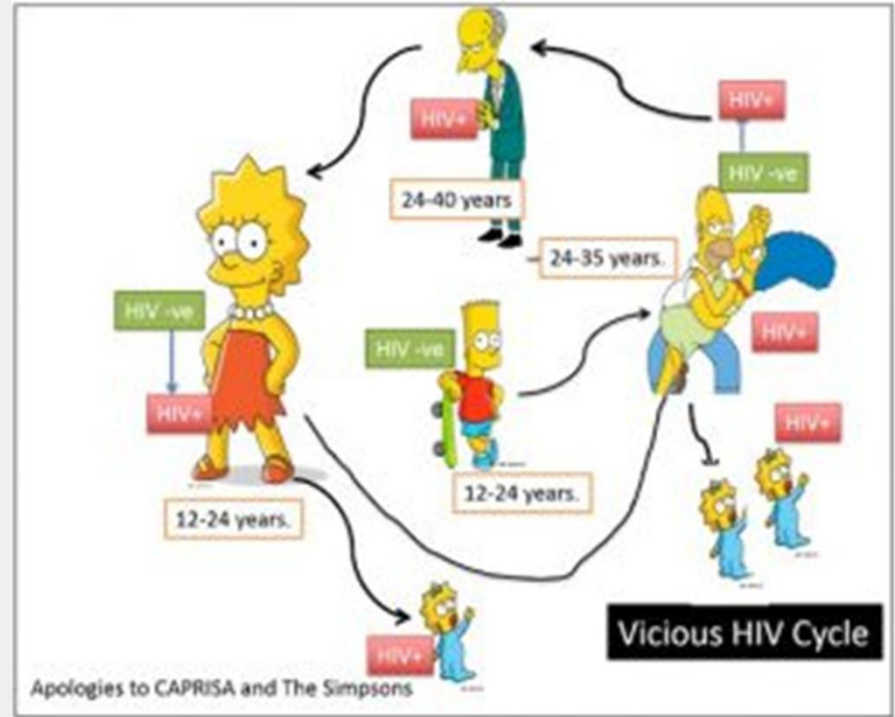
---

# PEPFAR Approach for Adolescent Girls and Young Women



# The Vicious Cycle of HIV Transmission

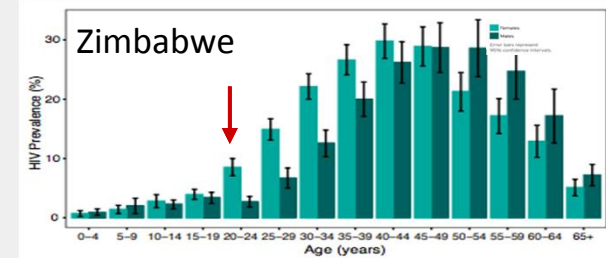
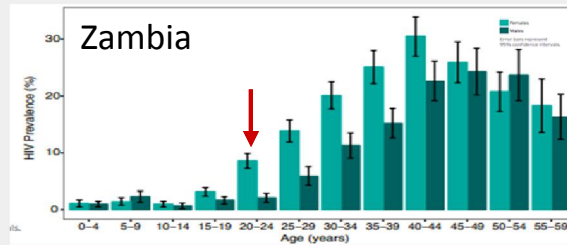
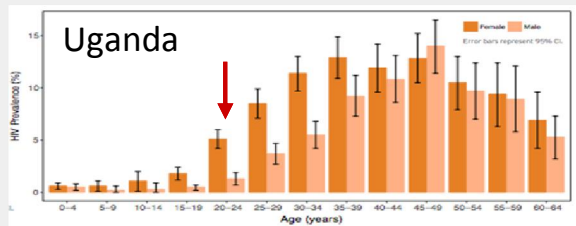
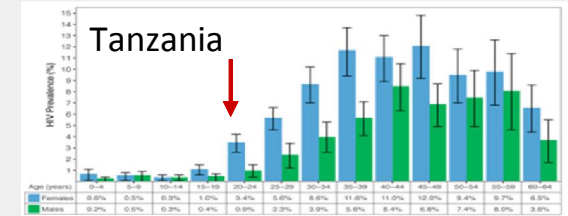
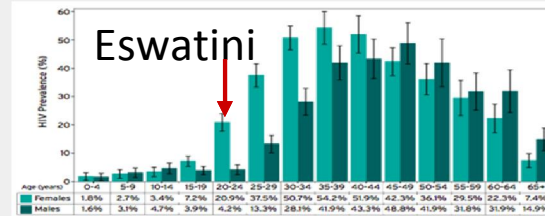
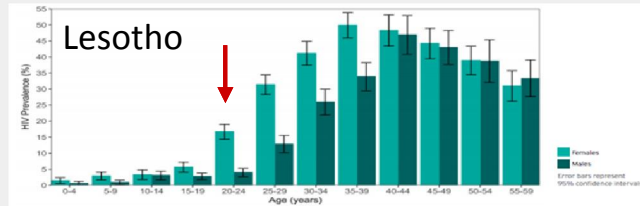
- Young adult men infect adolescent girls & young women (AGYW)
- In turn, AGYW go on to infect their male peers continuing the cycle.
- There are more than 1000 new infections in AGYW every day in SSA
- **This must change!**





# Young Women are Disproportionately Affected by HIV

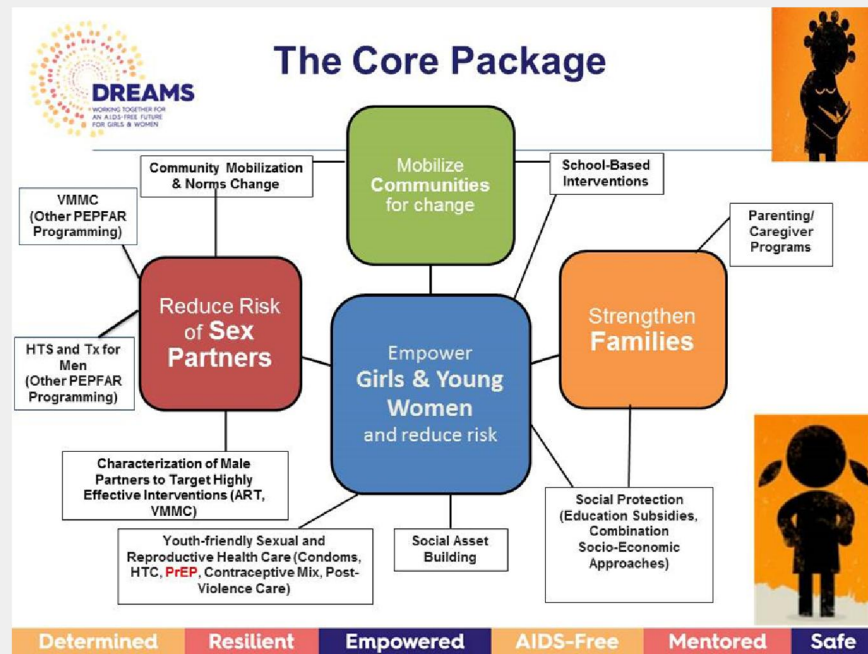
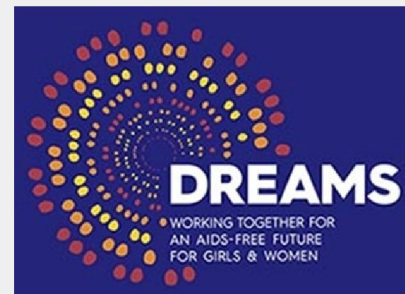
## HIV Prevalence Among Women and Men by Age and Country



# A Comprehensive Program to Break the Infection Cycle

On World AIDS Day 2014, PEPFAR announced an innovative partnership to address this problem: DREAMS.

- Determined, Resilient, Empowered, AIDS-free, Mentored, and Safe
- A program for young women that focuses on delivering a comprehensive prevention package so they live HIV-free lives.
- Core package of interventions:
  - Empowering girls and young women
  - Reducing risk of sexual partners
  - Strengthening families
  - Mobilizing communities for change



# PrEP is a rapidly expanding intervention

- In more than 20 PEPFAR countries and counting
- PEPFAR has initiated thousands of girls and women on PrEP in SSA
- Structural challenges include:
  - Restrictive policies in some settings, lack of implementation of policies, low resources for PrEP, demand creation and general awareness of PrEP
- Individual challenges include:
  - daily pill burden, side-effects, stigma and discrimination, IPV, lack of adolescent friendly health services, etc.





**USAID**  
FROM THE AMERICAN PEOPLE



**PEPFAR**

# USAID Microbicide Program — Approach to Addressing Challenges

# The USAID Microbicide Program's Approach to Expanding Product Introduction

**Microbicide Product Introduction Initiative (MPii):** Expansion of HIV prevention products occur primarily through a set of interconnected research projects focused on introduction and access for women and girls

## Policy and Systems Approach

**OPTIONS:** Offers targeted support to expedite and sustain access to HIV prevention products  
Examples: Plan4PrEP Toolkit; Communications Accelerator; PrEP4Youth PSAs, Costing Guidelines; TWG Support and Collaboration with WHO/UNAIDS

---

## Innovations in PrEP Implementation

**POWER:** Diverse service models for PrEP delivery  
Examples: Mobile services, youth clinics and FP clinics; improved recruitment, retention, adherence approaches for AGYW

**EMOTION:** HCD approach to deliver an enhanced delivery experience that increases uptake and adherence in AGYW  
Examples: The 'V' brand discreet pill carriers, The 'V' Experience

---

## Measuring unintended consequences of PrEP

**GEMS:** Monitor/characterize resistance for DVR and oral PrEP failure  
Examples: Establish resistance monitoring in national guidelines; Protocols implemented in 3 PEPFAR-DREAMs countries.

**CHARISMA:** Assess risk for IPV to mitigate violence issues with PrEP uptake  
Examples: HEART tool; counseling

# The USAID Microbicide Program's Approach to Expanding Product Options for Women



- Portfolio takes a strategic forward-looking approach to invest in products that fill identified gaps in the achievable range of prevention options
- Support research on products with novel characteristics that are expected to significantly increase acceptability and effective use by women at high risk
- Investments prioritize affordability and product characteristics that reduce burden on strained healthcare systems. Equity and community acceptability will also be considered.



# USAID Microbicide Program-Supported Prevention Product Pipeline



## Biodegradable Implant

- **Target Dosing:** 6- 12 months
- **Active Ingredient:** TAF, CAB, contraceptive (MPT)
- **Key Features:** long-acting, low user burden, discreet, reversible, low HCS burden



## Microarray Patch

- **Target Dosing:** at least 1 month
- **Active Ingredient:** CAB
- **Key Features:** short wear/long acting, low user burden, low HCS burden, discreet, painless



## Next-Generation Ring

- **Target Dosing:** at least 1 month
- **Active Ingredient:** Dapivirine, Tenofovir, contraceptive (MPT)
- **Key Features:** low HCS Burden, low user burden, discreet, painless, long-acting, reversible

---

USAID remains supportive of  
researchers throughout the world  
working together to achieve  
epidemic control